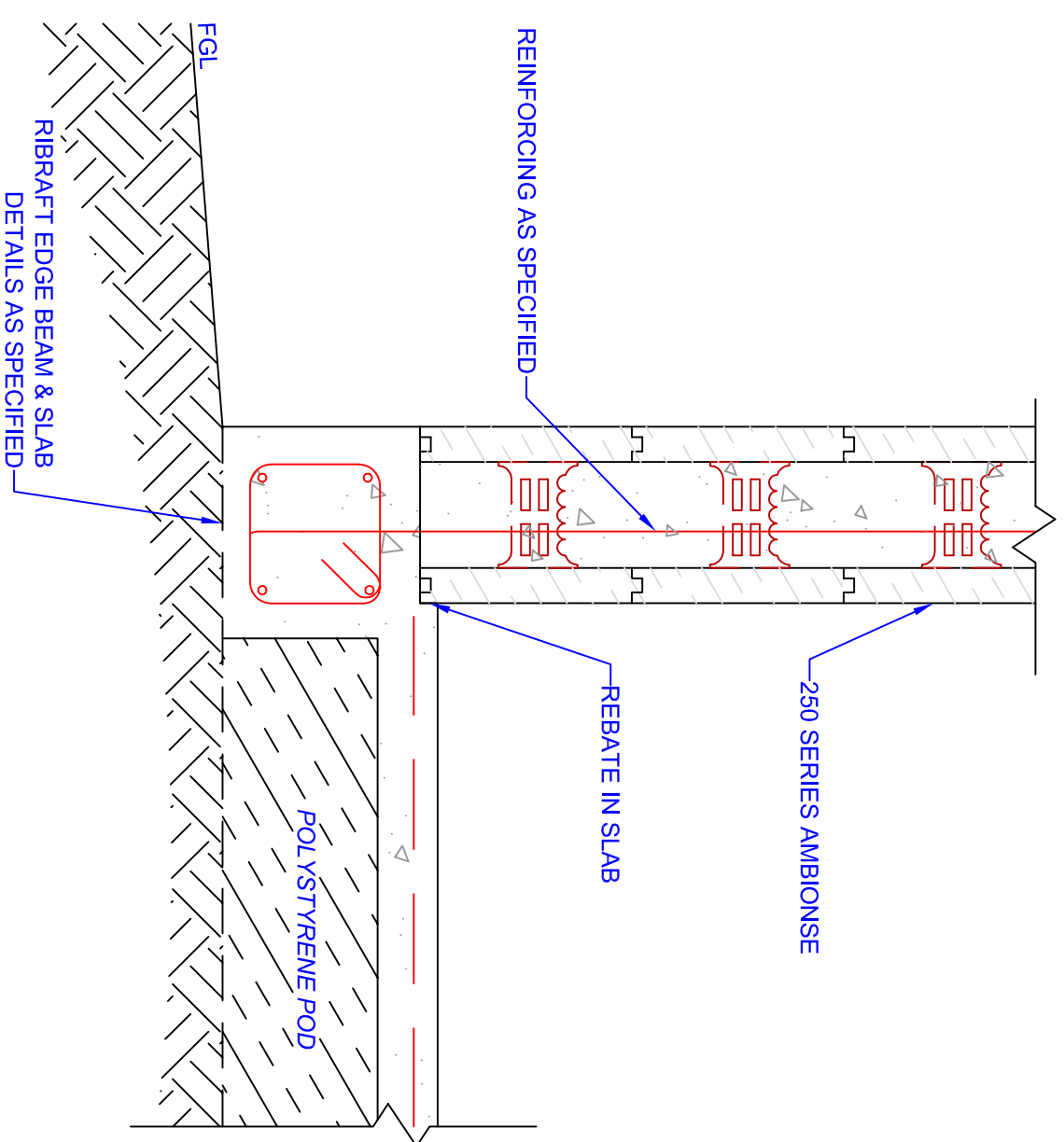


NOTE: TEMPORARY BRACING MAY BE REQUIRED ON FOOTING WALL TO ENSURE CORRECT ALIGNMENT



These details are intended to assist the user in the construction of Ambionse insulated concrete formwork structures

Title:			
<b>AMBIONSE FOOTINGS HEADER BLOCK AND RIBRAFT</b>			
Drawn:	<b>C COTTLE</b>	Scale:	<b>1:10 @ A3</b>
Date:	<b>NOV 2005</b>	Cad ref N°:	<b>FTG-HB/RR</b>