



AMBIONSE INTERTENANCY WALL SPECIFICATION

This wall is suitable for new intertenancy walls*. It can be loadbearing or non-loadbearing and has the following properties:

FieldSTC = 53 (Code requires FSTC50)

FRR = 180/180/180

Insulation (R-value) = 3.3

Structural Wall

250 Series Ambionse blockwork filled with standard 20MPa concrete pump mix.

Lining

Sheets are touch fitted and the sheet joints must occur on a polypropylene flange.

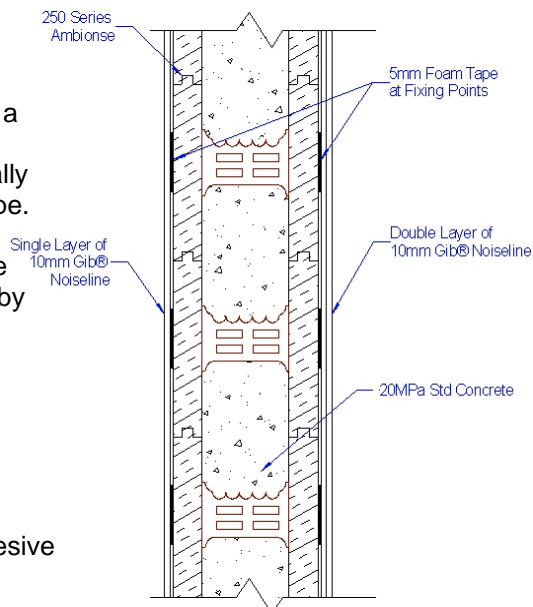
SIDE 1: One layer of 10mm Gib® Noiseline fixed vertically to wall separated from polystyrene with neoprene foam tape.

SIDE 2: Two layers of 10mm Gib® Noiseline fixed vertically to wall separated from polystyrene with neoprene foam tape. The vertical joints of the outer layer are offset by 600mm from those of the inner layer.

Fasteners

SIDE 1: (one layer of Gib® Noiseline)
Standard Gib® screws

SIDE 2: (two layers of Gib® Noiseline)
Inner layer - Standard Gib® screws
Outer layer - Standard Gib® screws or wallboard adhesive



Fastening the Lining

SIDE 1: (one layer of Gib® Noiseline)

Place 100mm long strips of 5mm thick neoprene foam tape at all fixing points. Use standard Gib® screws to fix the lining to the polypropylene flange of the Ambionse blocks through the neoprene foam tape. Screws to be placed at 300mm centres around the sheet edges and 600mm centres down the centre of the sheets.

SIDE 2: (two layers of Gib® Noiseline)

Inner layer Place 100mm long strips of 5mm thick neoprene foam tape at all fixing points. Use standard Gib® screws to fix the lining to the polypropylene flange of the Ambionse blocks through the neoprene foam tape. Screws to be placed at 300mm centres around the sheet edges and 600mm centres down the centre of the sheets.

Outer layer Either screw-fix or glue to the inner layer. Where screw-fixing, the screws shall penetrate through the inner layer and neoprene foam tape into the polypropylene flanges of the Ambionse blocks only. Screws to be placed at 300mm centres around the sheet edges and 600mm centres down the centre of the sheets. The use of adhesive shall be in accordance with the "Gib® Living Solutions Site Guide".

Screws shall be placed no closer than 12mm to the sheet edge and shall not penetrate the polystyrene sides of the Ambionse block.

Jointing

Inner layer unstopped.

Outer layer – all fastener heads stopped and all sheet joints tape reinforced and stopped in accordance with the "Gib® Living Solutions Site Guide".

* This wall may not provide the given properties if constructed as a retrofit wall within an existing building.